

# VELOCE WASH

The ultimate racing luminaire



**AYRTON**

Digital Lighting

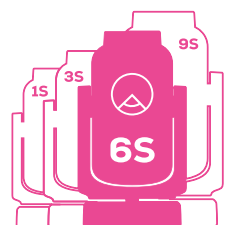




## Veloce Wash

### The ultimate racing luminaire

Get ready to take control of an exceptional machine. Ayrton proudly presents Veloce Wash, the fourth luminaire in the Ultimate series, pushing the boundaries of design and performance.





**U**ltra-compact, Veloce Wash redefines integration with a 850 W high-efficiency sealed LED module, calibrated at 6500 K. Delivering an impressive 40,000 lm, its light sits optimally on the black body curve for perfect neutrality. Veloce Wash is built for competition. It delivers absolute performance with no compromises. Designed for all conditions, it excels both indoors and outdoors, even in salt-laden environment.

Ayrton's engineers have integrated lightweight aluminium components to drastically reduce weight, achieving the best power-to-weight ratio in its class—without relying on costly or unstable alloys. At just 39 kg, it's the lightest in its category.



## A true racing machine built for the stage

Technology and speed have always driven us forward. To unlock new creative possibilities, Veloce Wash features infinite continuous rotation on both pan and tilt axes. Equipped with a 190 mm Fresnel lens, the proprietary 12-lens optical system delivers a 14:1 zoom ratio, covering a range from 4° (half peak) to 57° (one-tenth peak).

Veloce Wash integrates an advanced CMY progressive colour mixing system, using ultra-fast gradient discs that provide a continuous filtering surface for perfect homogeneity. This system ensures brighter colours and flawless pastel rendering from the moment filters are introduced, regardless of the selected combination.

## Infinite pan and tilt rotation







Ultimate luminaire

A luminaire that drives emotion

A progressive CTO offers precise colour temperature adjustment, complemented by a 7-position colour wheel fitted with specialised filters for expanded creative possibilities. For greater flexibility, Veloce Wash includes a variable colour rendering index adjustment, allowing users to fine-tune CRI levels for different applications. The framing system allows precise positioning of each shutter blade over 100% of the beam, with a +/-90° rotation, ensuring perfect framing regardless of fixture orientation. A fast 15-blade iris diaphragm, adjustable from 15% to 100%, optimises the beam at a tight angle.



6 Series - Source

**850 W - 6500 K**

Zoom aperture

**4° to 57°**

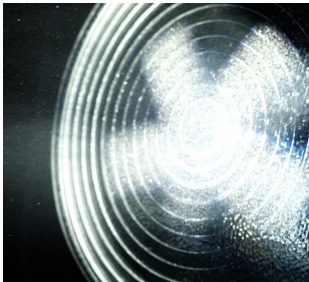
Frontal lens

**190 mm**

Weight

**39 kg**

**IP65**  
Water-resistant





**Veloce Wash is built for competition.** It delivers absolute performance with no compromises.



## A machine built for excellence

The effects section of the Veloce Wash is equipped with a high-definition glass gobo wheel featuring six rotating geometric patterns an indexable rotating scrim filter a multi-layer CMY+RGB animation wheel and a rotating beam-shaping system. Veloce Wash features an all-new progressive frost system, allowing for precise adjustment of the desired diffusion level.

In the Ultimate range, every detail matters, and Veloce Wash redefines the standards of premium luminaires. In other industries, it would be considered a competition-grade machine. Its ergonomics have been completely redesigned, with four highly integrated handles for easy installation.

A powerful and versatile luminaire that balances creativity, subtlety, and strength—an exceptional fixture with no equivalent on the market.



**40,000  
lumens**



## Colours



CMY colour mixing system



Variable CTO



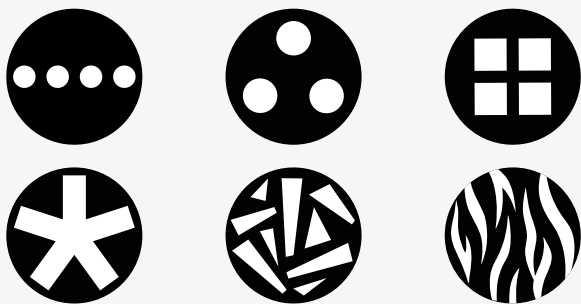
Variable CRI 70 to 88



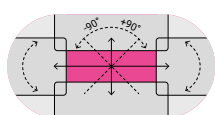
1/4 CTB   Magenta   Congo Blue   Green   Orange   Blue   Red

## Rotating gobos

Gobos Ø 30 mm | Image Ø 18 mm



Framing system



100% surface area

Iris diaphragm



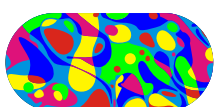
15% to 100% open

Progressive frost



0% to 100%

Graphical animation effects wheel



CMY & RGB Colours

Half scrim filter



Beam shaper



Dimmer



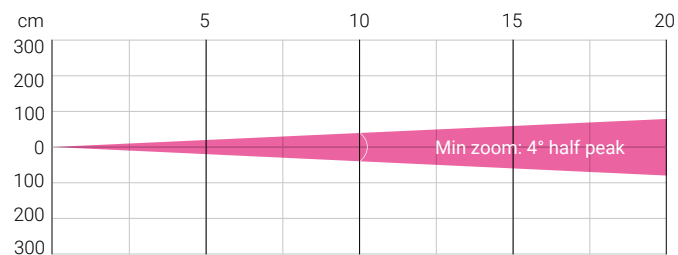
0 to 100 %

Strobe

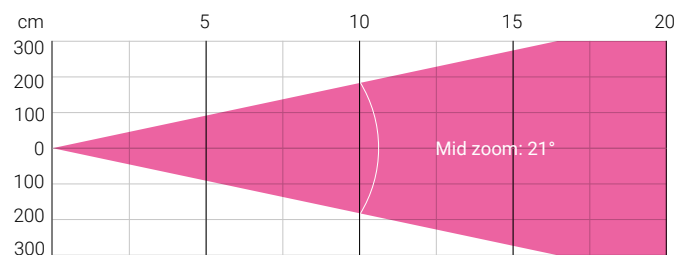


1 to 25 fl/sec.

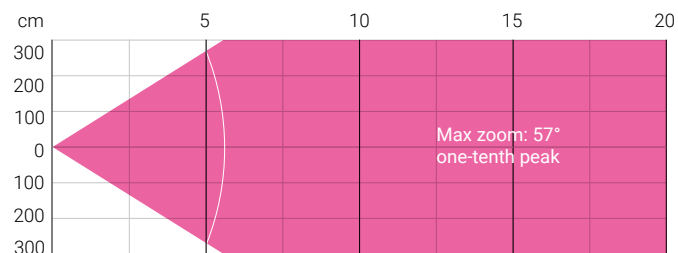
## Photometry



Distance (m)	5		10		15		20	
Unit	lux	Ø	lux	Ø	lux	Ø	lux	Ø
White	81264	0.35	20316	0.7	9029	1.05	5079	1.4



Distance (m)	5		10		15		20	
Unit	lux	Ø	lux	Ø	lux	Ø	lux	Ø
White	16266	1.85	4067	3.71	1807	5.56	1017	7.41



Distance (m)	5		10		15		20	
Unit	lux	Ø	lux	Ø	lux	Ø	lux	Ø
White	2467	5.43	617	10.86	274	16.29	154	21.72

Total Flux	40,000 lm (midd zoom, STAGE mode)
CCT LED Source	7400 K (±400K)
CCT Luminaire	6500 K (±400K)
Ra Luminaire	70 (±2)
TLCI	47
TM-30	Rf: 72 / Rg:95

Fan Mode	Noise Level (dBA)	Flux (lm)
Auto Mode	43.8	38,800
Stage Mode	48.8	39,600
Silence Mode	36.8	29,500
Super Silence	32.5	20,600

Note: noise measured at 1m distance, static status, ambient 31dBA  
Integrating sphere measurement

## OPTICS

- 12-element 14:1 zoom high-resolution optic system
- Beam aperture: 4 ° (half peak) to 57 ° (one-tenth peak)
- Fast motorised linear zoom
- Tempered anti-reflective coated lenses
- 190 mm frontal Fresnel lens

## LIGHT SOURCE

- 58,000 lumens white light engine
- Total luminaire output: up to 40,000 lumens (integrating sphere measurement, Stage Fan mode)
- Colour temperature output: 6500 K
- CRI: greater than 70
- Rated life (L70): up to 40,000 hours
- Flicker-free source management suitable for TV applications and all video-recorded events

## MOVEMENT

- Extremely accurate positioning
- Moving-head operated via either 8- or 16-bit resolution
- High-resolution stepper motors operated via microprocessors to ensure extreme accuracy and smooth movement
- Pan and tilt automatic repositioning
- Moving-head range: infinite pan and tilt rotation

## COLOURS

- Sophisticated colour mixing system providing CMY color mixing
- Variable CTO colour temperature correction
- Variable CRI improvement filter
- Fixed colour wheel with seven complementary colours

## GOBOS

- Indexable rotating gobo wheel with six high precision glass gobos and a scrim filter
- Progressive scrim filter to reduce light intensity at shallow projection angles
- Adjustable-speed rotating gobo in both directions
- Gobo diameter: 30.0 mm
- Image diameter: 18.0 mm
- Gobo thickness: 1.1 mm

## FRAMING SYSTEM

- 4 individually positionable shutter blades on a 100% surface area in all positions
- Rotation of the shutter blades module: +/- 90°

## IRIS DIAPHRAGM

- Fast iris diaphragm with adjustable dynamic effects
- Iris range: 15% to 100% open

## FROST

- 0% to 100% variable linear frost

## EFFECTS

- Focusable CMY & RGB graphic animation effect-wheel with continuous rotation in both directions
- Indexable de-focusable rotating beam-shaping optic

## DIMMER / STROBE

- Electronic dimmer, allowing perfect light adjustment from 0 to 100% without colour variation
- Strobe effect, with speed adjustment from 1 to 25 flashes per second

## SOFTWARE FEATURES

- Local DMX addressing of luminaire and optional parameters through its built-in LCD control panel
- Remote DMX addressing of luminaire and optional parameters through a standard RDM DMX controller
- Information menu including hour counter, temperature, software version

## HARDWARE FEATURES

- Graphic LCD display for addressing and special functions settings, with flip function
- 5 menu buttons to set functions
- Excess temperature protection
- Integrated wireless CRMX TiMo RDM receiver from LumenRadio
- IP65 XLR 5 pin male and female connectors for DMX connection
- IP65 RJ45 IN / OUT connectors for ArtNet connection
- IP65 PowerCON TRUE1 male connectors for power connection

## CONTROL

- DMX 512 protocol, through DMX cable or a wireless system
- DMX-RDM compatible
- Stand-alone mode and Master/Slave modes
- ArtNet & sACN protocol through Ethernet cable
- Local control panel, with IP65 LCD display
- Choice of 2 DMX modes (from 38 to 60 DMX channels)

## POWER SUPPLY

- Electronic supply with active PFC
- 100 to 240 Volts – 50/60Hz
- Power: 1300 W maximum

## COOLING SYSTEM

- Advanced liquid cooling system
- IP68 Self-adjusting variable speed fans for quiet operation (Auto mode)
- Selectable ventilation user modes including Super Silent Mode
- Safety protection against excess temperature

## HOUSING

- Moving-head skeleton made of aluminium and steel metal plates
- Base in die-cast composite alloy
- Heatsinks in aluminium and copper
- Moulded covers in self-extinguishing fire retardant ABS PC (V0 class)
- Four-side handles for transportation
- Four heavy-duty feet for better stability
- IP65 protection rating
- Exterior finish: black (Carbon)

## INSTALLATION

- Fastening bracket system: two Omega ¼ turn brackets designed for use with standard clamps
- Mounting points: eight ¼ turn locking fittings allowing installation of Omega brackets on luminaire
- Safety cable attachment point

## OPERATING PARAMETERS

- Operating positions: all (device on floor or fixed to a support)
- Maximum permitted ambient temperature (Ta max): 45° C (113° F)
- Minimum permitted ambient temperature (Ta min): -20° C (-4° F)
- Minimum usage distance: 4.0 m (13.123 ft.)

## COMPLIANCE

### EU (EMC & LVD):

- EMC Directive 2014/30/EU
- LVD Directive 2014/35/EU

### US (SAFETY & EMC)

- UL 1573
- FCC Part 15, Subpart B:2018

## SIZE

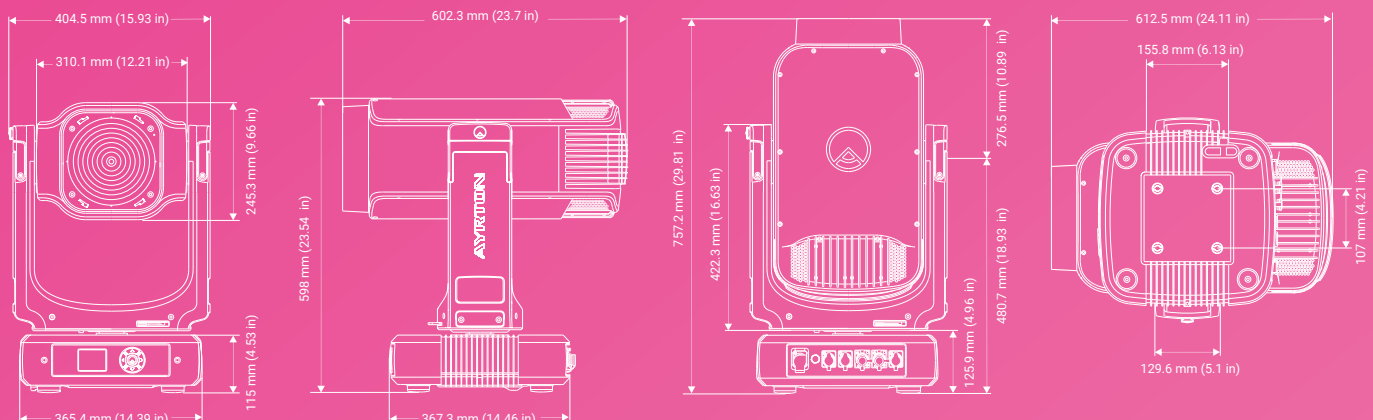
- Product: 404 x 757 x 366 mm (l x h x d)
- Flight-case foam: 500 x 640 x 680 mm (l x h x d)

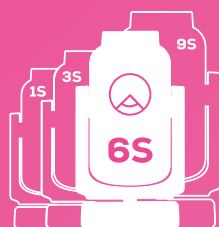
## WEIGHT

- Product: 39 kg

## PRODUCT CODES

- 012541: VELOCE WASH - ULTIMATE IP65 6 SERIES





[www.ayrton.eu](http://www.ayrton.eu)

02.2025